

Fact Sheet

836 Harvard Avenue, Menlo Park, CA 94025

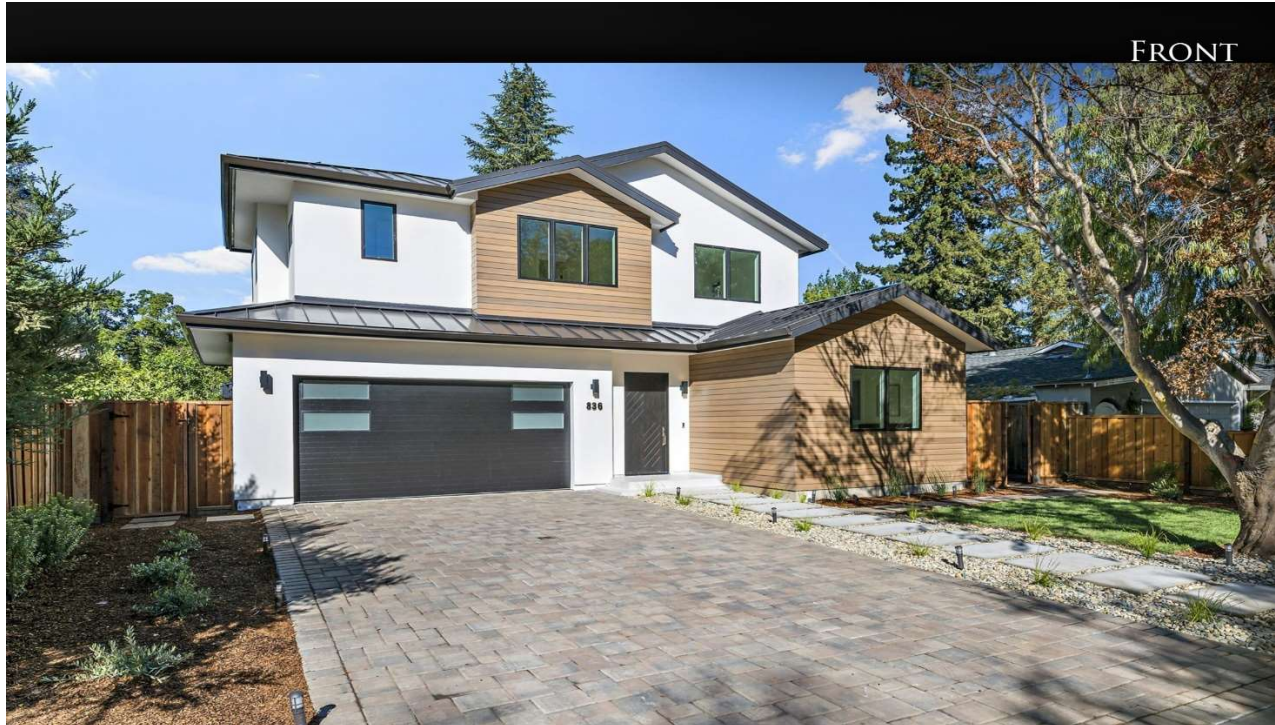
7 Bedroom, 7 ½ Bath

Total Square Footage - Approximately **5465 total sq. ft. (including garage)** on approx. **8500 sq ft lot**

Main House: 4464 sq ft

ADU: 601 sq ft

Garage: 400 sq ft



DETAILS OF THE HOME

Entry

Front door leads into the hallway that leads into the main living area.

Living Room

To the right of the hallway, there is a formal living room with two large windows that allows ample light to come in.

Covered Porch

The covered porch is very private and is located between the living room and dining room. It has two ceiling heaters, speakers.

Kitchen

Elegant, two-tone kitchen with ample cooking and storage space for the most enthusiastic cook. The white and walnut cabinets with quartz counters and backsplash define the modern kitchen; stainless steel appliances provide a beautiful contrast to the wooden cabinets. A large island allows counter seating for four; a reach in pantry provides added storage.

Family Room

Part of the open living space with a large sliding door overlooking the entire deck and backyard. Sliding doors from the kitchen and family room lead into the large deck, garden outside.

Junior Suite (main level)

Ideal for guests/in laws/parents; en suite bath

Playroom/Office

This flexible room opens from the hallway towards the front of the house.

Master Bedroom Suite (upper level)

This master suite facing the backyard is very private. It features a walk-in closet with customized closets, sliding doors open to a private balcony overlooking the backyard. Bathroom features, a free-standing tub, shower with handheld spray, beautiful tiles around bathtub

Bedrooms (upper level)

Three bedrooms, customized closets, and en-suite bath (one jack and jill with tub and overhead shower, and one with standing shower)

Bar (basement)

Bar has attractive black cabinetry with glass and floating shelves. Large wine cooler and a beverage center along with a speed oven and dishwasher. A large glass wine storage area. Large sliding doors leading into the lightwell for natural light. A full bath in the hallway.

Gym Room(basement)

Large lighted room with glass double doors and sliding doors leading into lightwell. It has an attached walk-in closet.

Guest en-suite(basement)

A bedroom with an attached bathroom and a sliding door leading into the stairwell.

Storage(basement)

A large storage room adjacent to the bar.

Interiors

- Custom cabinets throughout the house in kitchen, bathroom, bar, ADU etc

- Media wiring with surround sound speakers
- Attached bathroom in all bedrooms
- Durable composite decking outside living room
- Laundry room in basement, 2nd floor and ADU
- Marvin Elevate windows
- Marvin modern sliding four panel sliding door leading into the patio
- Miele appliances in kitchen
- Gas fireplace in the living room
- Wooden closets in every room, linen closets
- Wet bar with wine cooler, beverage cooler, dishwasher, and speed oven
- Metal roof
- Lighted basement with doors in each room
- Detached ADU with a bedroom, laundry room
- Modern floating staircase with glass railings
- Toto water saving commodes
- Hans-Grohe and Isenberg fixtures in bathrooms
- Bathrooms with ceiling and elegant wall lighting
- 2-car garage with wiring for EV charging

Systems

- Surveillance ready on all sides of property
- Speakers in family room, kitchen, living room, inside and outside porch, and master bedroom
- 3-zone heating and air conditioning
- Solar ready

Exteriors

- Beautifully landscaped front yard and backyard
- Composite deck outside the living room